

PREPARING FOR MEXICO UPSTREAM INVESTMENTS PART D: MEXICO GEOSPATIAL INFORMATION SYSTEM (GIS) PROJECT AND DATABASE

COMPONENT OVERVIEW

FIRST EXTERNAL RELEASE DATE:
AVAILABLE NOW

EXPECTED FINAL DELIVERABLE:
AVAILABLE NOW

The GIS PROJECT AND DATABASE COMPONENT (PART D) is an interactive GIS Mexico database and project designed, assembled and built by Alconsult's Team. The project provides a spatial oil and gas database and mapping system for sedimentary basins and areas of interest. The project is packaged and distributed as a working tool that allows client staff and management to access and share relevant Mexico data.

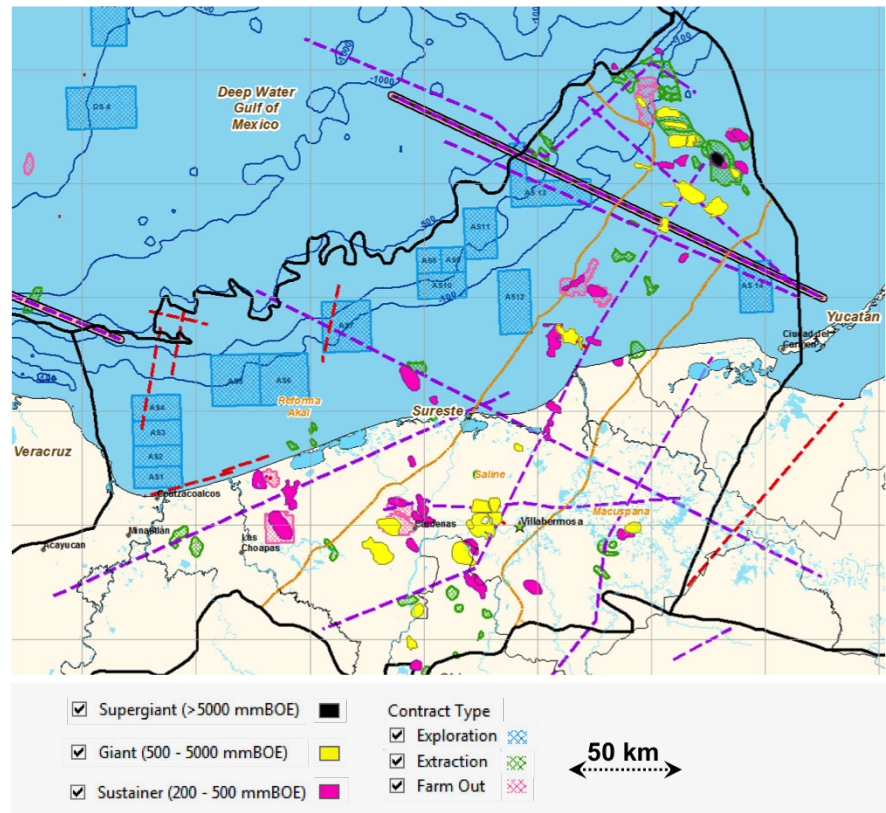


FIGURE: Southeastern Mexico, Sureste Basin

FOR MORE INFORMATION PLEASE CONTACT US

RON THORNHILL
rthornhill@alconsult.net, +1.403.355.2528

DAVID BIRNIE
dbirnie@alconsult.net, +1.403.616.5660

GREG HOWARD
ghoward@geoseis.ca

The GIS Project facilitates the ability of multi-disciplinary teams to display combinations of geoscience, production, infrastructure, surface geography and cultural information in order to illustrate and understand existing trends of interest and to predict future opportunities in Mexico.

Data sources include public domain data and information researched, prioritized and organized by Alconsult's team. Alconsult's alliance partner GEOSEIS Inc. has been involved in building such projects in thirty-five countries around the world over the last 10 years.

COMPONENT OVERVIEW (CONTINUED)

The working project is a mix of raster and vector digital data for Mexico. It includes, for example, ~320 georeferenced maps and images, ~50 hyperlinked illustrative geological cross-sections, ~35 hyperlinked illustrative seismic sections, locations of ~550 existing oil and gas pools sorted and characterized by various attributes. Emphasis has been on quality and scope of coverage rather than on quantity of images and inputs.

Alconsult's Mexico GIS project is a platform utilized to assemble relevant Mexico map-based geotechnical data. We have included data and maps of discovered and producing Mexico pools and pool groupings with associated characteristics (API gravity, reservoir geologic age and depth) relative to Mexico Round 0 and Round 1 blocks and Contract Types.

Alconsult's GIS design is inspired by an ease-of-use approach for users and ease-of-availability to users approach for Mexico data. Characteristics of Alconsult's GIS projects are:

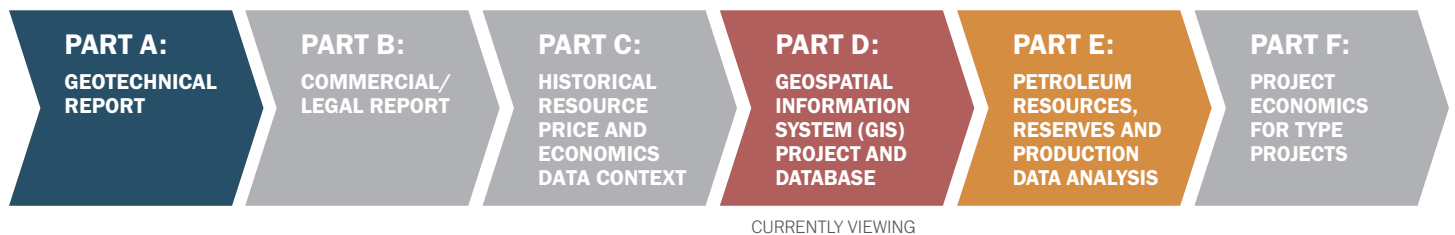
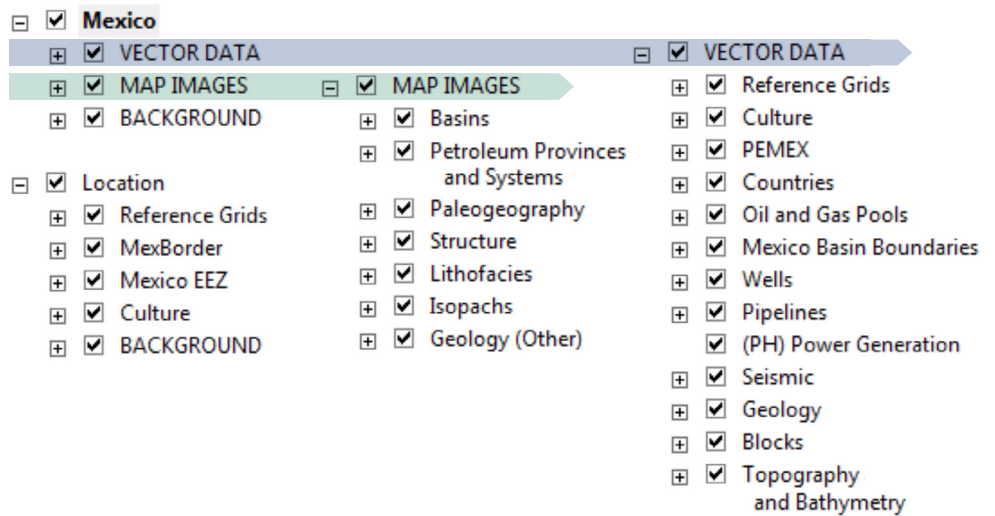
1. Utilizes a consistent and standard coordinate system (WGS84)
2. Integrates maps and figures from data sources
3. Captures pre-set map areas and map scales with "bookmarks".
An iterative set of bookmarks supports telling of stories
4. Provides project sharing and collaboration within your team
(technical to management)
5. Incorporates a proven design
6. Acts as a geotechnical project data repository
7. Supports on-the-fly map and presentation creation and becomes a productivity tool.
8. Offers security features. The project can be protected with a variety of safeguards.

Typical usage of this product by Alconsult clients is as a self contained standalone deliverable. We also offer the option to clients to add/ combine their own licensed and proprietary data to the base product giving them a more comprehensive useful and customized proprietary tool to assist them with in-house efforts.

Delivery of Alconsult's product is available in both ESRI ArcReader packaged format (no additional software cost to purchasers) or in component pieces that can be ported and assembled in a purchaser's licensed GIS software.

Alconsult's base price for this product includes ten (10) post-delivery consulting hours at no additional cost to purchasers for training, customization and/ or addition of their own proprietary data to the base product.

MEXICO GIS PROJECT DESIGN



SYNERGY WITH OTHER COMPONENTS FROM ALCONSULT'S 2015 MEXICO STUDY

1. Alconsult's **MEXICO GEOTECHNICAL REPORT (PART A)** provides a systematic review of existing hydrocarbon production and future expected prospectivity in the context of the regional geology. We progress from an overview of production, reserves and resources for the entire country, to a description of tectonic and stratigraphic concepts in the six main producing basins, to a review of hydrocarbon production from those basins. Major play types are described in terms of trap type, source, seal and reservoir with more detailed descriptions of the major producing play trends.
2. Existing Mexico hydrocarbon pools/CNH reserves entities and their locations, hydrocarbon type, API and GOR characteristics, producing history, reserves, producing reservoirs by geologic age, depths, etc. are available as an interactive database in our **MEXICO PETROLEUM RESOURCES, RESERVES AND PRODUCTION DATA ANALYSIS (PART E)** product. This product is delivered in a Spotfire Data Analytics Webplayer format, or via direct interactive access.